

Agenda - 2022 RLAA Annual Meeting

May 3, 2022

- Introductions and call to order
- Rice Lake
- Updates
- Initiatives
- Financials
- Open Forum and Adjournment

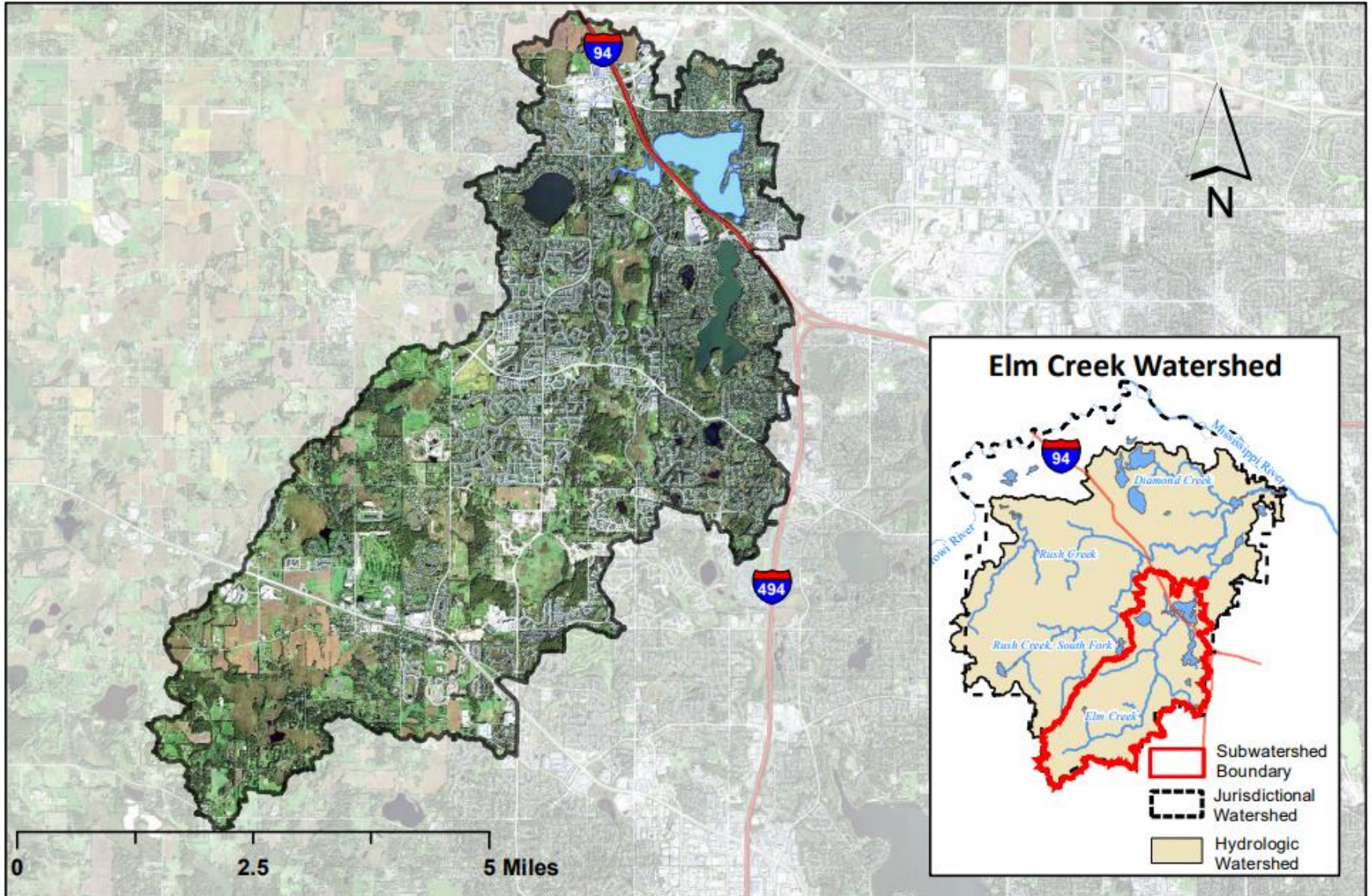
Rice Lake Area Association

email: ricelakeassoc@comcast.net

- RLAA is one of Minnesota's many volunteer, non-profit, lake associations
- Lake associations work with citizens, other lake associations, researchers, city, county, state, and federal agencies and programs
- RLAA encourages stewardship of water, soil, and vegetation for recreation and wildlife habitat
- RLAA Volunteer Board Members:
 - Hente Braam, President
 - Jeremy Coenen, Vice President
 - Mark Ellingson, Director
 - Luke Johnson, Director
 - Nick Mannel, Director
 - Curt Putland, Director
 - Scott Roeglin, Director
 - George Schneider, Secretary
 - Rick Stulac, Director
 - Michael Thiede, Treasurer

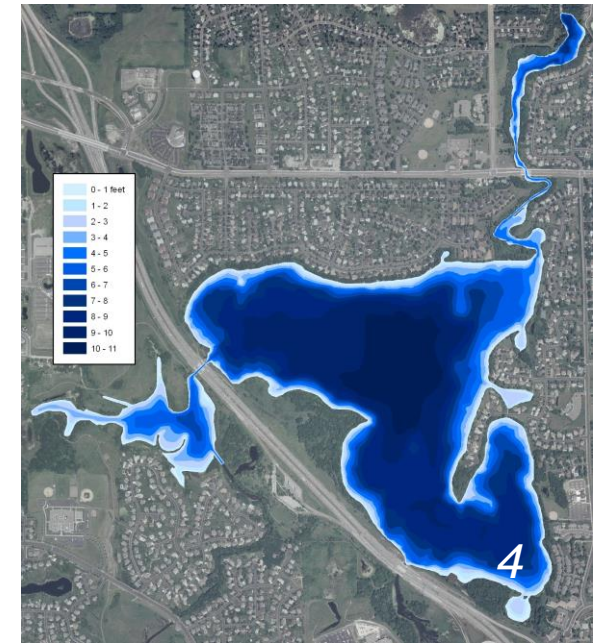


Rice Lake



Rice Lake

- 307 acre, 7ft avg, 10ft max depth reservoir created by Elm Creek dam, 52:1 upstream watershed
- 16,092 acre Rice Lake watershed within the 66,400 acre Elm Creek watershed
- Public carry-in boat launch (for kayaks, canoes, and paddleboards)
- No public access for trailered boats
- Wildlife habitat (northern pike, bass, sunfish, perch, crappie, carp, bullhead, painted turtles, snapping turtles, frogs, toads, snakes, muskrat, squirrels, mink, beaver, fox, coyotes, racoons, deer, rabbits, bats, cormorants, hawks, eagles, loons, turkeys, ducks, geese, osprey, gulls, heron, swans, egrets, turkey vultures, pelicans, cranes, kingfishers, coots, . . .)
- Rice Lake is significantly impaired (eutrophic) with excess phosphorous and nitrogen from chemical fertilizers and decaying organic matter
 - 53% from storm drains
 - 24% internal load (produced within the lake)
 - 14% shore drainage
 - 9% from upstream and the atmosphere



Rice Lake Update

The winter drawdown is over

- The lake dropped to half its normal depth
- An unusually large early snowmelt overwhelmed the dam bypass, filling the lake earlier than previous drawdowns (before ice out)
- The City's Department of Public Works raised the dam bypass level April 11 (ice out was April 10). Questions? Email: publicworks@maplegrovern.mn.gov
- A plant survey will measure success in interrupting the life cycle of invasive versus native vegetation
- A fish survey will estimate species diversity and quantity
- ~80% of the winter fish kill were Sunfish (the aerator was likely less effective in shallow water)
- Expect continued summer algae blooms due to fertilizer runoff



Rice Lake Update

Shared private boat ramp access has been enhanced

- To respect The Drangeid's generosity, their private boat ramp at 14212 87th Ave N now has gated access
- RLAA boaters are issued boat stickers and unique gate access codes (please lock the cable again when you finish)
- The ramp pavers have been widened to reduce lawn damage



The freeway noise abatement walls are up

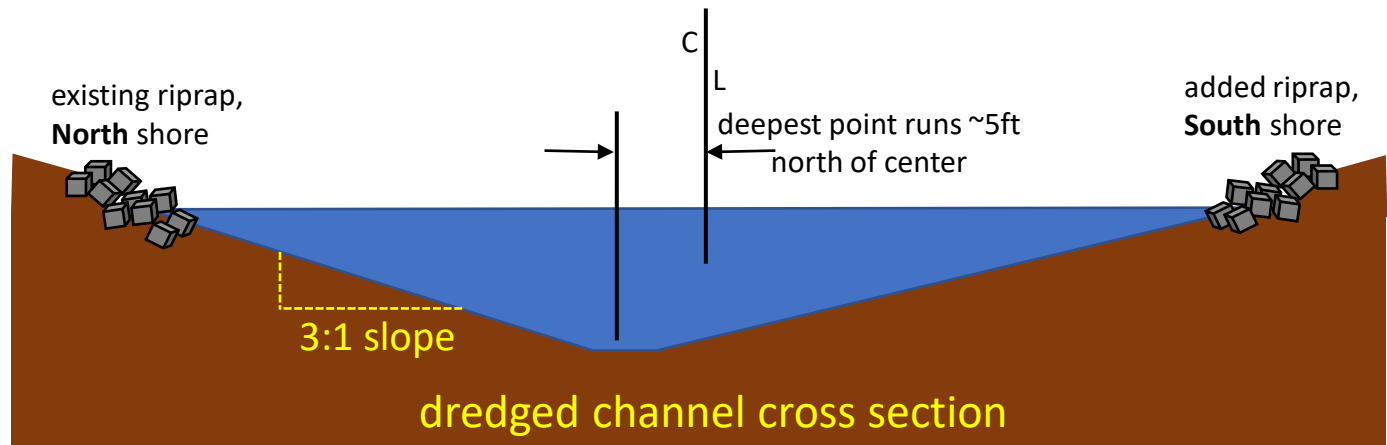
- Most of the lake was skipped 😞



Rice Lake Update

The dredging is done

- The drawdown enabled channel dredging to the same depth as the bay
- TDT removed $\sim 130 \text{ yds}^3$ of material per the survey and DNR dredging permit (mostly from the lake end of the channel)
- TDT re-profiled the channel to DNR required 3:1 slope (or less) and added riprap to the south shore
- Deepest point runs $\sim 5\text{ft}$ north of the center of the channel
- Reducing erosion helps delay the need for (re)dredging



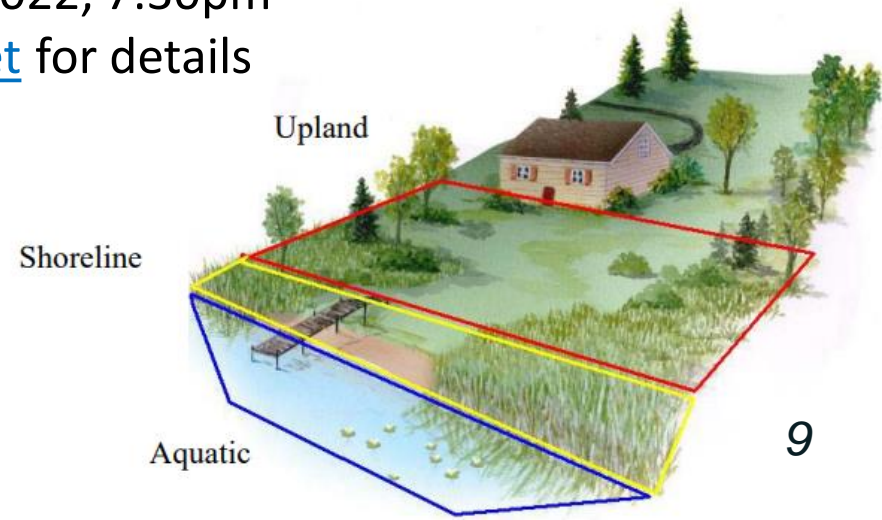
RLAA Initiatives

- Deploy no-wake buoys to reduce erosion and encourage boating safety
- Deploy winter aerator to reduce fish kill
- Coordinate fish, vegetation, and water quality surveys and remediations
- Coordinate drawdowns (when recommended) to disrupt invasive vegetation
- Evaluate cost/benefit of implementing fish survey recommendations
(cormorants and loons help keep bullhead in check, but removing carp has proven challenging)
- Apply for grants and cost shares among stakeholders
- Coordinate shared private boat ramp access
- Support best practices for a healthy lake



Lake Stewards Program

- Available to RLAA members via the statewide Minnesota Lakes and Rivers Advocacy mnlakesandrivers.org
- Utilizes an app version of the DNR's "Score Your Shore" program
- Provides educational resources and statewide representation
- Resident Lake Stewards can share best practices for healthy shorelines
- Interested in becoming a Lake Steward?
 - Virtual training meeting: May 17, 2022, 7:30pm
 - Contact ricelakeassoc@comcast.net for details



RLAA Income Statement

1/1/2021 to 1/1/2022			
Revenue			
Membership Dues		\$7,385.53	
Go Fund Me		\$387.80	
Total Income			\$7,773.33
Expenses			
Excel Energy		\$ 283.80	
Drawdown Costs		\$ 950.00	
Ramp Improvement		\$ 814.72	
Dredging		\$ 8,610.00	
Aeration Costs		\$ 359.01	
Total Expenses			\$11,017.53
Total Income/Loss			-\$3244.20

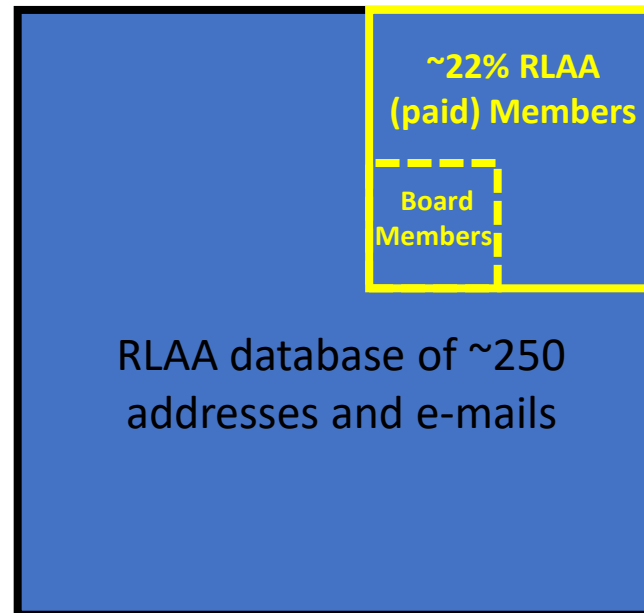
RLAA Balance Sheet

	1/1/2021	1/1/2022
Assets		
RLAA Bank Accounts		
Checking	\$ 15,538.35	\$ 12,206.95
Savings	\$ 3,057.13	\$ 3,057.71
Total current assets	\$ 18,595.48	\$ 15,264.66
Liabilities		
Drawdown	\$ 1,300.00	
Ramp Improvement	\$ 800.00	
Dredging	\$ 8,600.00	
AIS Plant Survey		\$ 315.00
Fish Survey		\$ 1,125.00
Minnesota Lakes and Rivers Advocacy		\$ 150.00
Insurance		\$ 700.00
Aeration		\$ 300.00
Total Liabilities	\$ 10,700.00	\$ 2,590.00
Overall Total Assets	\$ 7,895.48	\$ 12,674.66

Treasurer's Report

- **Fiscal year ending: May 1, 2022**

- 56 members have contributed \$5,740 in 2022 dues ytd
- Dues for lake/creek shore membership were reduced from \$125 to \$100
- ~100 properties have lake access
- Voluntary boaters' contributions funded most of the dredging project
- The City will cover 70% of the \$4,800 cost of the post-drawdown plant and fish surveys
- If the fish survey requires restocking, the City will also cover 70% of that cost
- 2022 ytd membership overview:



Open Forum

- Ideas?
- Concerns?
- Comments?
- Want to get more actively involved?

ricelakeassoc@comcast.net