

# Citizen Stream Monitoring Program



Minnesota  
Pollution  
Control  
Agency

## 2006 Individual Site Report

### Introduction

Thank you for participating in the Citizen Stream-Monitoring Program (CSMP)! The MPCA appreciates the important work you do. This report summarizes CSMP data that you collected during 2006. A total of 486 CSMP volunteers monitored 793 stream sites across the state. The report provides an in-depth look at results for a specific site, including a map, summary statistics, and a chart of the data throughout the monitoring season. The pie charts on page 3 compare transparency readings at your site to all readings taken within the major river basin in which the site is located. A guide to understanding transparency categories from "Poor" to "Excellent" can be found on the enclosed insert.

If you would like to see a summary of all CSMP data collected during 2006, the statewide annual report will be available on the MPCA website in July 2007 at:  
<http://www.pca.state.mn.us/water/csmp-reports.html>

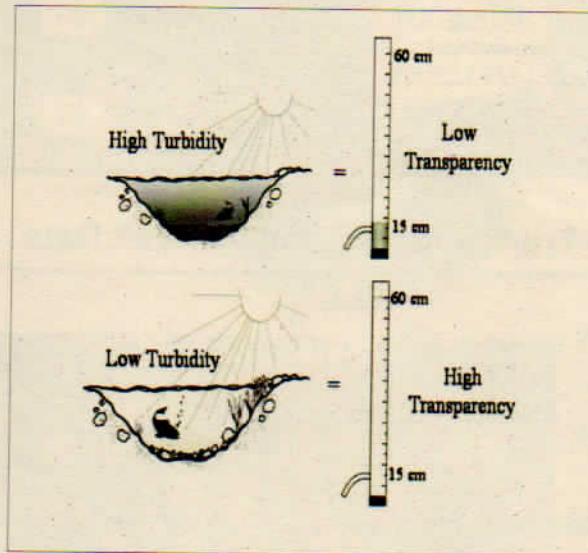
To view site data from previous years, go to:  
<http://www.pca.state.mn.us/water/csmp-search.cfm>

A "Station Search" menu allows you to quickly access all the data available from your site. A down-loadable file is also available.

### How CSMP Data Are Used to Assess Turbidity

The state uses transparency tube data to help determine where streams exceed water quality standards for "turbidity"- the murkiness of water. When stream turbidity is high, transparency is low. By establishing a scientific link between these two measures, transparency can be used as a surrogate for turbidity, allowing the water quality of more streams to be assessed using citizen help.

### How Transparency relates to Turbidity



A transparency tube reading under 20 centimeters indicates a violation of the turbidity standard. Please note: this does NOT apply to designated trout streams, where a link between transparency and turbidity has not been well established. To see how many transparency readings at your site were less than 20 cm, look at the box under "Readings<20cm" in the "2006 Transparency Tube and Rainfall Data Summary" table.

If you have questions or comments on this report, please contact Laurie Sovell or Johanna Schussler at 1-800-657-3864 (Greater MN) or 651-296-6300 (Twin Cities Metro Area), or by email at [laurie.sovell@pca.state.mn.us](mailto:laurie.sovell@pca.state.mn.us) or [Johanna.schussler@pca.state.mn.us](mailto:Johanna.schussler@pca.state.mn.us)

Cleaner Water – One Volunteer at a Time

Volunteer: George Schneider

Stream Name: Elm Creek @ dock S of CSAH 30 in Maple Grove

Site: CSMP0827

County: Hennepin

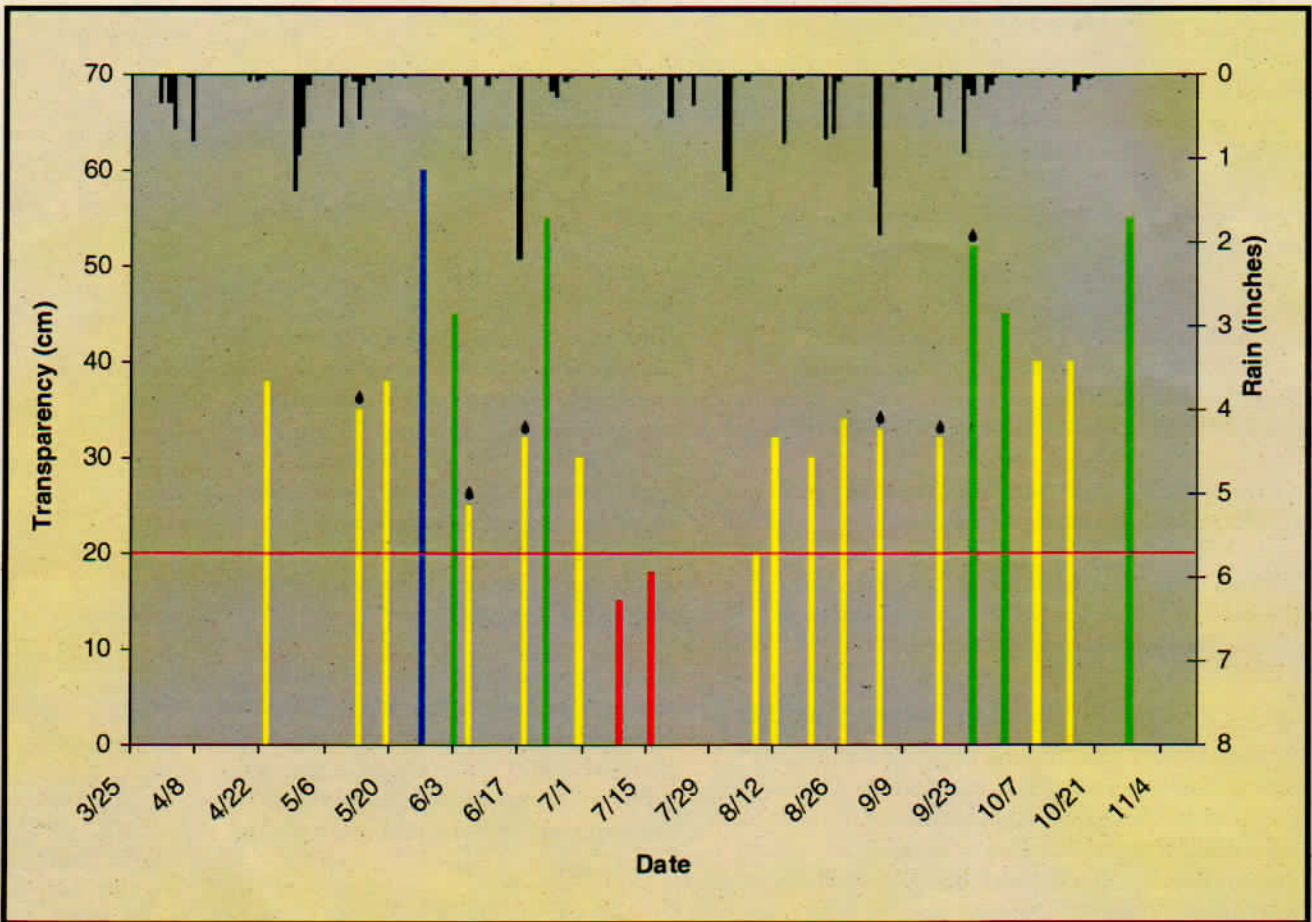
Watershed Code: 07010206

Watershed Name: Mississippi River (Twin Cities)

### 2006 Transparency Tube and Rainfall Data Summary

Monitoring Period	T-Tube Data			Rain
From: 3/25/2006	Readings: 22	Readings <20cm: 2		Total (inches): 24
To: 11/11/2006	Avg	Min	Max	
Years Monitored: 2	T-Tube (cm): 37	15	60	Readings: 231

### 2006 Transparency and Rainfall Data



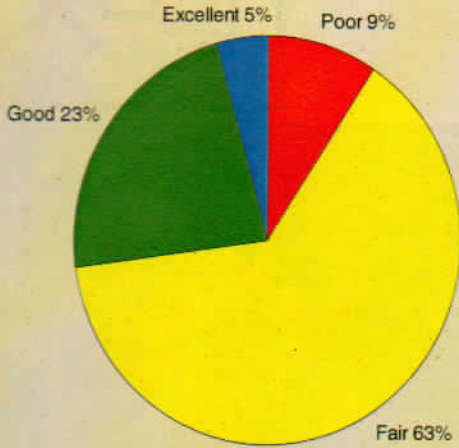
#### Transparency Categories:

Poor <20	Fair 20-40	Good 41-59	Excellent >=60	Rain	T-tube readings below red line = violation of turbidity standard	Raindrops indicate transparency reading taken in response to a rain event.

# Comparison of Your Site to All CSMP Sites in the Major River Basin

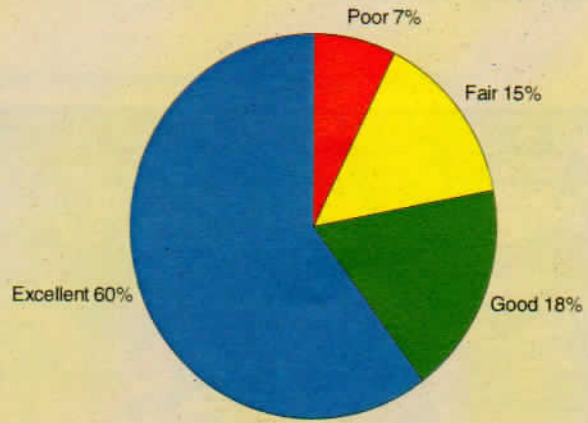
Percentage of Transparency Readings across Categories: Poor - Excellent

**Your Site: CSMP0827**



22 Transparency Readings

**Upper Mississippi River Basin**



3601 Readings From 244 Sites

## Impaired Waters Assessment Status for your Stream (see insert for more information)

### 2006 Turbidity Assessment:

Data do not meet assessment criteria.

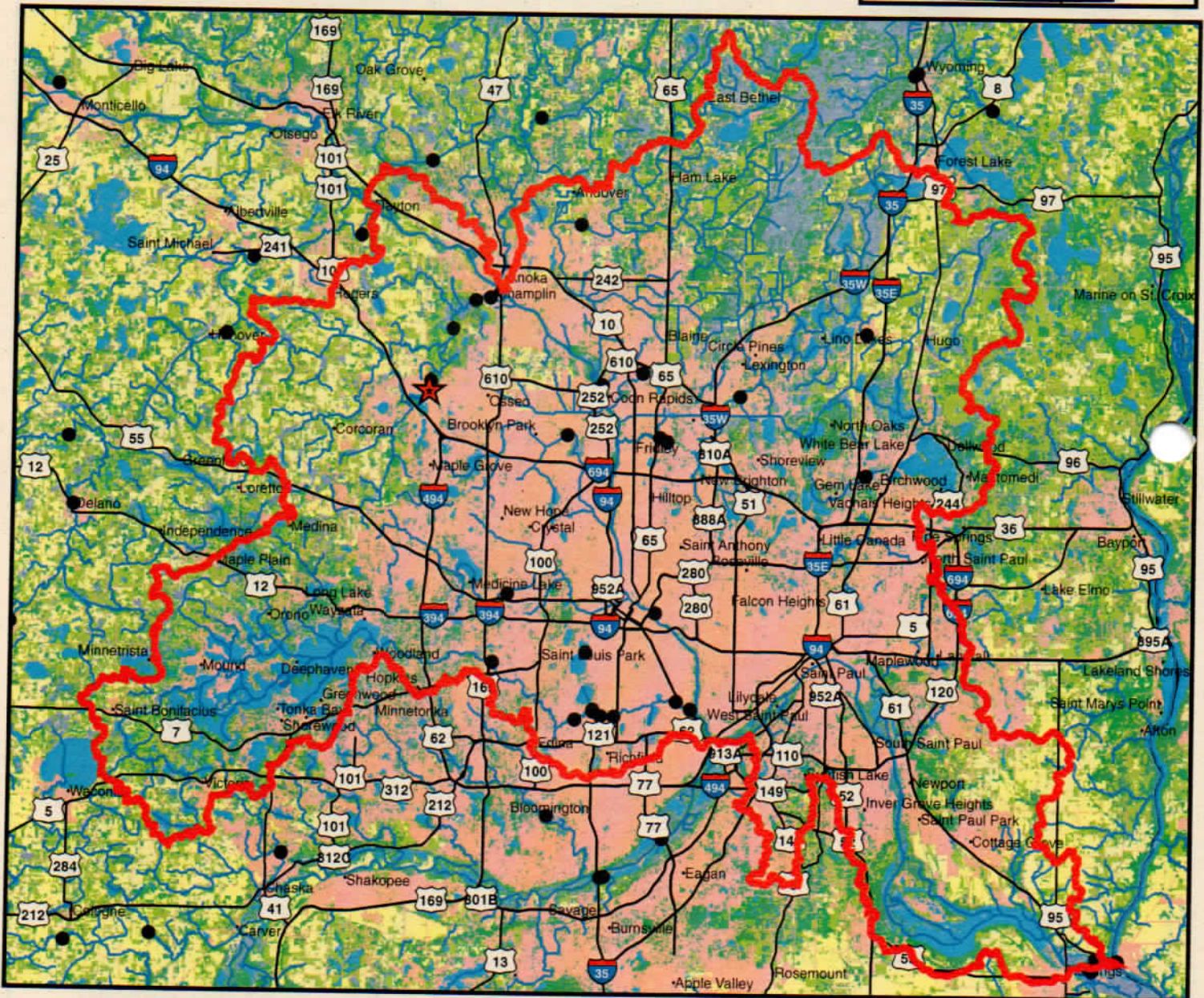
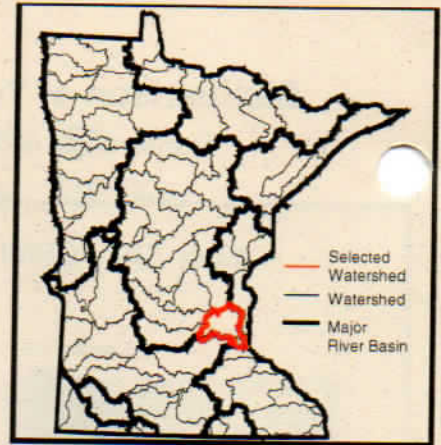
### Additional Assessments

Parameters Showing Impairment	Year First Listed
Dissolved Oxygen	2004

Parameters NOT Showing Impairment	Year Last Evaluated
Zinc	2006
Copper	2006
Invertebrate Community	2006
Nickel	2006
Total Hardness	2004

# Watershed Name: Mississippi River (Twin Cities)

George Schneider  
 14000 92nd Place N  
 Maple Grove MN 55369



Map Legend:	Open Water	Urban	Forest	Pasture	Agriculture	Wetlands	★ Your CSMP Site	● Other CSMP Sites	— Watershed	— Road	— Water
<b>Land Use Percentages:</b>	1992: 9	41	10	16	10	12					
	2001: 9	47	15	13	9	8					