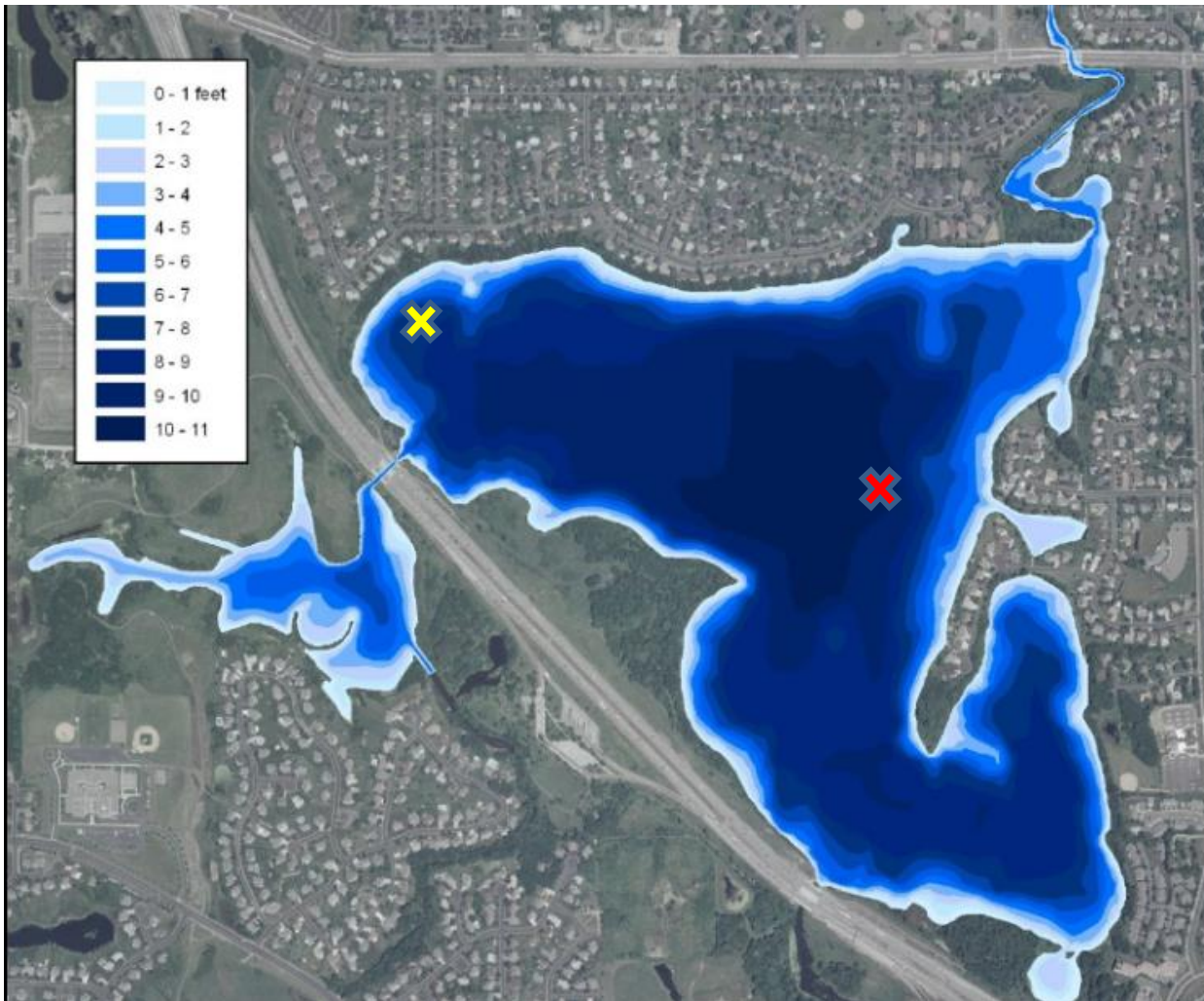




## Approximate location of the adrift Rice Lake winter aerator (as of 11/28/2017)

Issue: As of today (Tuesday, November 28) the winter aeration unit on Rice Lake has been cast adrift by winds and ice out and relocated it towards the other side of Rice Lake. The force of the winds and ice pulled out the electrical power panel from the shoreline (located at 15573 91<sup>st</sup> Ave. N) and dragged it into the edge of the water.



 Aerator original anchored location (prior to 11/28/2017)

 Aerator approximate drifted location as of 11/28



Present condition of the power meter panel after yanked into the lake on November 28<sup>th</sup>.